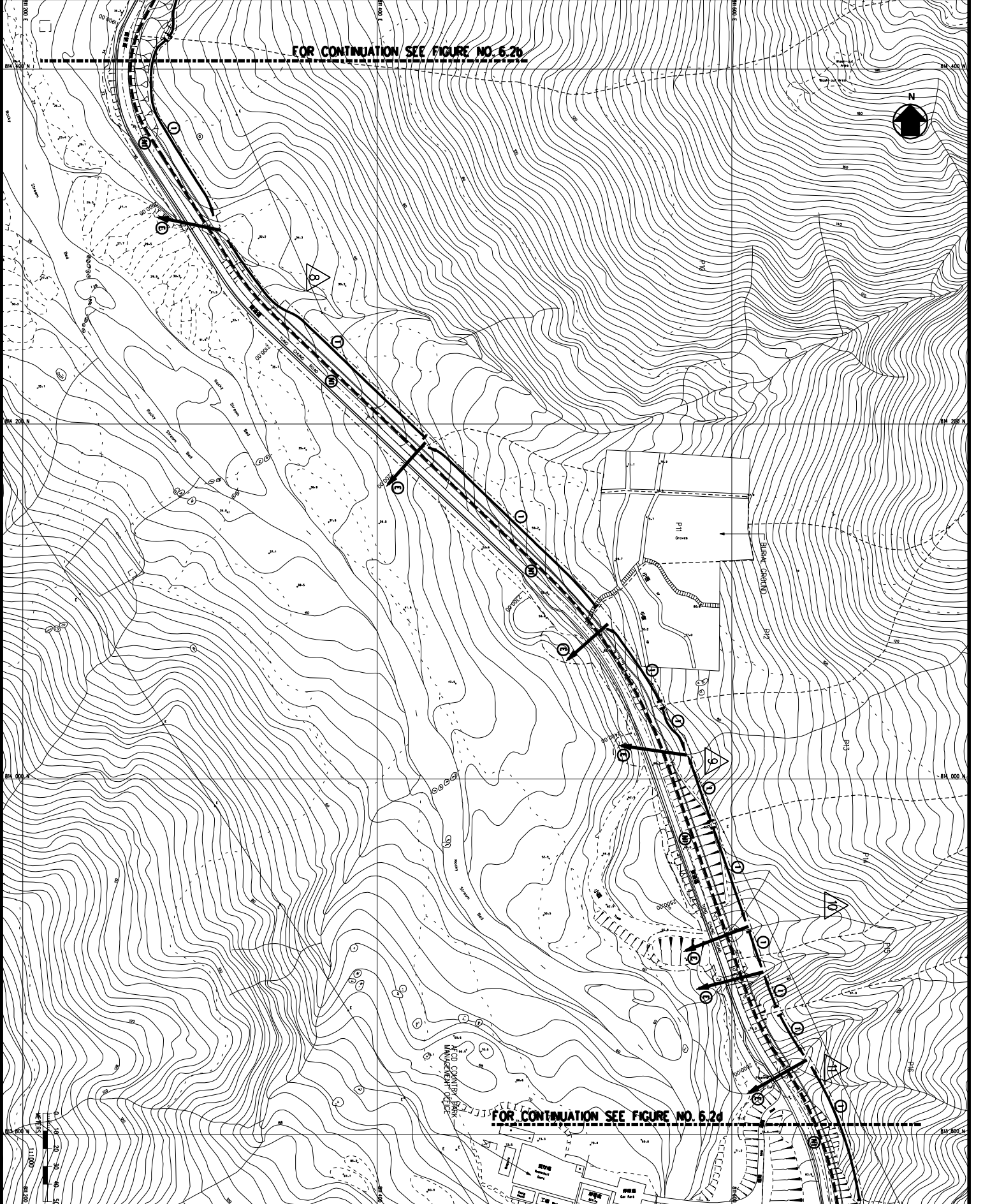


FOR CONTINUATION SEE FIGURE NO. 6.2b



FOR CONTINUATION SEE FIGURE NO. 6.2b

LEGEND

- ① WATER AND DRAINAGE CHANNELS (MIN. SIZE 300 WIDE x 100 DEEP)
- ② TEMPORARY DRAINAGE CHANNELS (MIN. SIZE 400 WIDE x 1500 DEEP)
- ③ TEMPORARY DRAINAGE CHANNELS (MIN. SIZE 600 WIDE x 1500 DEEP)
- ④ CONSTRUCTION SITE DRAINAGE CHANNELS (MIN. SIZE 400 WIDE x 500 DEEP)
- ⑤ TEMPORARY CROSS ROAD DRAIN
- ⑥ EXISTING CROSS ROAD DRAIN
- ⑦ TEMPORARY CARRIAGE PAV. ALONG EXISTING ROAD (MIN. SIZE 375m)
- ⑧ TEMPORARY CROSS PAV
- SETTLING TANK
- SETTLING TANK / OIL INTERCEPTOR

REV. NO.	DATE	BY	CHK. BY	DATE
A	ISSUED FOR INFORMATION & COMMENT	A. H. C.	H. C. S.	12.2.00
B	ISSUED FOR INFORMATION & COMMENT	A. H. C.	H. C. S.	4.2.02
C	ISSUED FOR FINAL REPORT	A. H. C.	H. C. S.	22.3.02

CLIENT: HIGHWAYS DEPARTMENT THE GOVERNMENT OF THE HONG KONG SPECIAL ADMINISTRATIVE REGION

PROJECT NO.: CE 13/2001

PROJECT: IMPROVEMENT TO TUNG CHING ROAD BETWEEN LUNG TSENG TAU AND CHEUNG SHA INVESTIGATION AND PRELIMINARY DESIGN ASSIGNMENT

TEMPORARY DRAINAGE LAYOUT PLAN

**Mouchel**  
Mouchel Asia Limited  
Consulting Engineers  
高碩亞洲顧問工程公司

DATE: 12.2.00  
CHECKED: H. C. S.  
DATE: 12.2.00  
DESIGNED: A. H. C.  
DATE: 12.2.00  
SCALE: 1:2000 (N.A.)

SHEET 3 OF 10  
PROJECT NO. 6.2c